

## Ultrasound Bath For Scissors In Beauty Salon With 200W Heating Power 2.85 Gallon

Our Product Introduction

for more products please visit us on [skymenultrasonic.com](http://skymenultrasonic.com)

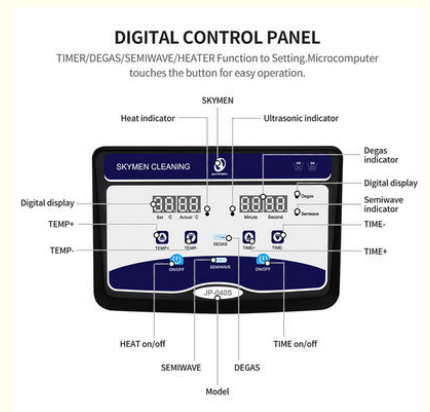
### Basic Information

- Place of Origin: China
- Brand Name: Skymen
- Certification: CE ROHS FCC SGS
- Model Number: JP-040S
- Minimum Order Quantity: 1 unit
- Price: Negotiation
- Packaging Details: 1 unit per box
- Delivery Time: In Stock
- Supply Ability: 8000 pcs per month

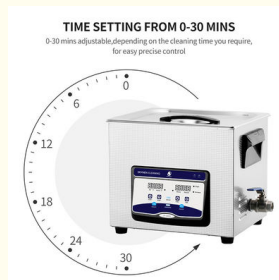


### Product Specification

- Model: JP-040S
- Frequency: 40KHz
- Capacity: 2.85 Gallon
- Tank Size: 12\*9\*6 Inch
- Ultrasonic Power: 120W/240W
- Heating Power: 200W
- Material: SUS 304
- G.W: 8.4KG
- Highlight: **Benchtop Ultrasonic Bath SUS304, Bench Top Ultrasonic Cleaner SUS304, Hardware Parts Tabletop Ultrasonic Cleaner**



### More Images



## Product Description

### Ultrasound Bath For Scissors In Beauty Salon With 200W Heating Power 2.85 Gallon

#### Home applications:

daily use items such as gold and silver jewelry, jewelry, headwear, brooches, glasses, bracelets, pens, CDs, razors, combs, toothbrushes, dentures, tea sets, etc., as well as bottles, nipples and fruits such as grapes, cherries, Strawberry. These accessories, tools and fruits are also sterilized while being cleaned. In addition, the hand can also be used for skin care with ultrasound, and long-term use can promote the skin to be soft and full of elasticity.

#### Stainless Bench Top



| Model   | Capacity<br>(L) | Tank Size<br>(L*W*H)mm | Ultrasonic<br>Power<br>(W) | Heating<br>Power<br>(W) | Frequency<br>(KHz) | Tank<br>thickness<br>(mm) | Material |
|---------|-----------------|------------------------|----------------------------|-------------------------|--------------------|---------------------------|----------|
| JP-008  | 0.8             | 150*85*65              | 35                         | 0                       | 40                 | 1                         | SUS304   |
| JP-009  | 0.9             | 150*135*65             | 60                         | 100                     | 40                 | 1                         | SUS304   |
| JP-010T | 2               | 150*165*100            | 60                         | 100                     | 40                 | 1                         | SUS304   |
| JP-020S | 3.2             | 240*135*100            | 120                        | 100                     | 40                 | 1                         | SUS304   |
| JP-030S | 4.5             | 300*150*100            | 180                        | 200                     | 40                 | 1                         | SUS304   |
| JP-031S | 6.5             | 300*150*150            | 180                        | 200                     | 40                 | 1                         | SUS304   |
| JP-040S | 10              | 300*240*150            | 240                        | 200                     | 40                 | 1                         | SUS304   |
| JP-060S | 15              | 330*300*150            | 360                        | 300                     | 40                 | 1                         | SUS304   |
| JP-080S | 22              | 500*300*150            | 480                        | 500                     | 40                 | 1                         | SUS304   |
| JP-100S | 30              | 500*300*200            | 600                        | 500                     | 40                 | 1                         | SUS304   |

#### Product Show:



### HEATING SYSTEM

Built-in heating board, You can adjust the heating water temperature from 20 to 80°C. It's efficient to remove oil and wax

Heating board

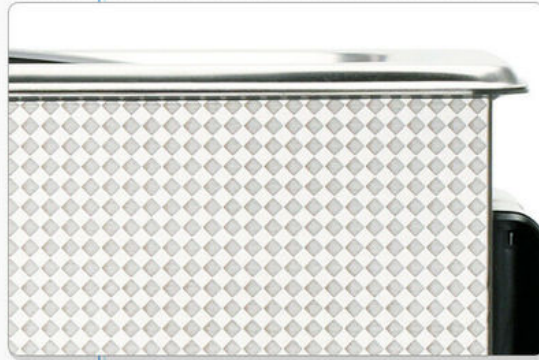


## Product details

1.

Printed surface stainless steel

fingerprint and dirt resisting



2.

SUS304 inner tank

non-welded stamped tank  
features corrosion and heat  
resisting

3.

#### Heat emission design

heat emission holes at the bottom increase working life



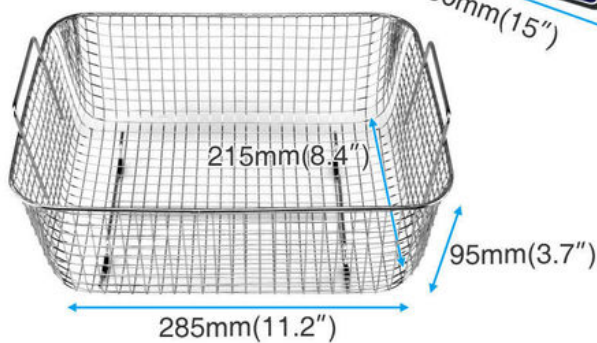
4.

#### Drain valve

The drain valve is made of high quality copper, corrosion-resistant and switch adjustable



Water should not cover it





## New Upgrade And Tilted Touch Control Pannel

Angle of 20 degrees tilted,user-friendly



### JP-040S 10L Product Show

Heating power  
200W

Ultrasonic power  
240W

Transducer  
4 Pcs



## PAY ATTENTION ON DETAILS

01

### Insulated handle design

Anti-static and anti-high temperature, more secure



02

### Stainless steel drain valve

One-half inch large drain valve, quicker to drain



03

### Cooling vents

Fast heat dissipation, protecting the circuit board and enhancing the service life



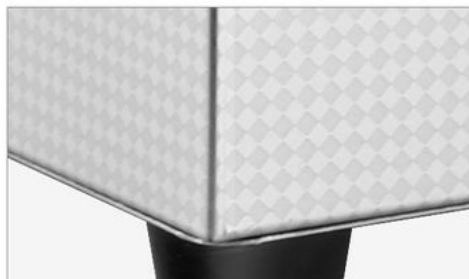
04

### Heat - resistant power cord

One-half inch large drain valve, quicker to drain



05



### Non-slip anti-shock pad

Non-slip, safer



### Safety switch

With ground insurance switch



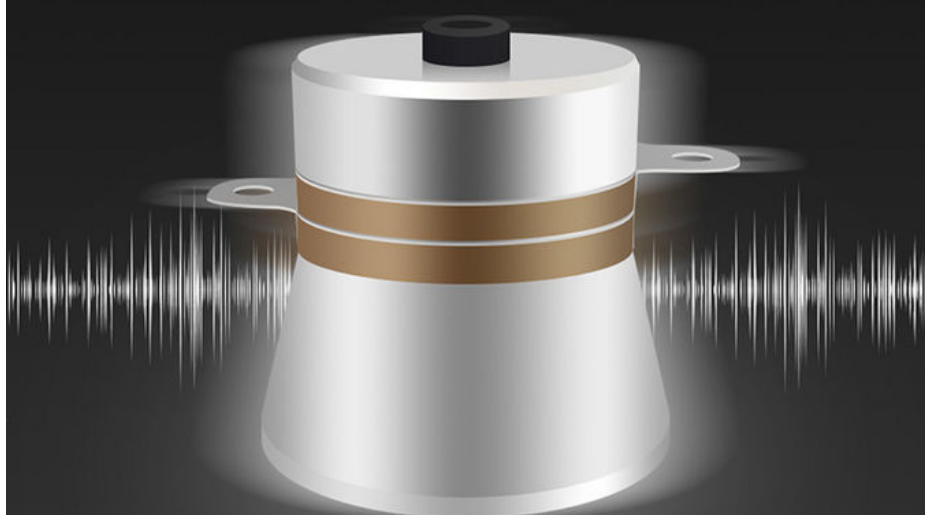
### Stainless steel cleaning basket

Fine workmanship and durability



## INDUSTRIAL TRANSDUSER

Strong cleaning resistance, good durability with powerful cleaning effect.



Frequency  
40kHz

Ultrasonic power  
240W

Transducer  
4 Pcs

## HEATING SYSTEM

Built-in heating board, You can adjust the heating water temperature from 20 to 80°C. It's efficient to remove oil and wax



Heating temperature  
**20-80°C**



Heating power  
**200W**

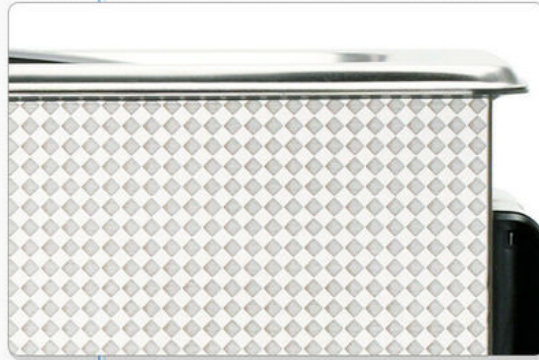


## Product details

1.

Printed surface stainless steel

fingerprint and dirt resisting



2.

SUS304 inner tank

non-welded stamped tank  
features corrosion and heat  
resisting



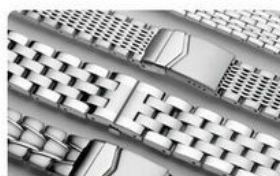
Application Area:

## MULTIPURPOSE CLEANING

It's efficient for most of household items that could be used to clean. get the best cleaning effects with the least effort.



Glasses



Watchband



Jewelry



Tableware



Toothbrush



Denture



Shaver



Bottles&nipples



Nail Tools

Before



After





Before

After



Before

After



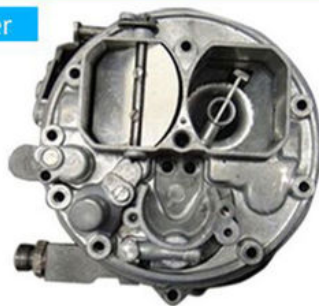
Before

After



Before

After



Before

After



Before

After







## COMPARISON OF CLEANING EFFECT







## Suitable for varieties of palces



Factory



Labs



Hardware store



## PRODUCT FEATURES

- 1 mechanical timing:  
The working time adjustable from 0-30 minutes or normal open mode.
- 2 mechanical control:  
mechanical control heater, 20-80 adjustable, temperature error within  $\pm 2$
- 3 high quality bath:  
High quality SUS 304 stainless steel punch forming bath with noise proof
- 4 anti-skid treatment:  
the machine is steady with the non-slip, shock-proof, anti-static, pressure-proof mats at the bottom
- 5 ceramic heater:  
New ceramic heater is stable and efficient
- 6 Humanized design, remarkable cleaning effect:  
Tank capacity over 6L with the drain valve; high cleaning efficiency, no harm to surface

**Industrial Ultrasonic Cleaning Machine**



| Model     | Capacity<br>(L) | Tank Size<br>(L*W*H)mm | Transducers<br>(pcs) | Ultrasonic<br>Power<br>(W) | Heating Power<br>(W) | Tank thickness<br>(mm) | Frequency<br>(KHz) |
|-----------|-----------------|------------------------|----------------------|----------------------------|----------------------|------------------------|--------------------|
| JP-120ST  | 38              | 500X300X250            | 12                   | 600                        | 1500                 | 2                      | 28/40              |
| JP-180ST  | 53              | 500X350X300            | 18                   | 900                        | 1500                 | 2                      | 28/40              |
| JP-240ST  | 77              | 550X400X350            | 24                   | 1200                       | 3000                 | 2                      | 28/40              |
| JP-300ST  | 99              | 550X450X400            | 30                   | 1500                       | 3000                 | 2                      | 28/40              |
| JP-301ST  | 99              | 800X300X400            | 30                   | 1500                       | 3000                 | 2                      | 28/40              |
| JP-360ST  | 135             | 600X500X450            | 36                   | 1800                       | 4500                 | 2                      | 28/40              |
| JP-480ST  | 175             | 700X500X500            | 48                   | 2400                       | 6000                 | 2                      | 28/40              |
| JP-600ST  | 264             | 800X600X550            | 60                   | 3000                       | 6000                 | 2                      | 28/40              |
| JP-720ST  | 360             | 1000X600X600           | 72                   | 3600                       | 9000                 | 2                      | 28/40              |
| JP-1108ST | 540             | 1000X900X600           | 108                  | 5400                       | 18000                | 2                      | 28/40              |
| JP-1144ST | 960             | 1200X1000X800          | 144                  | 7200                       | 27000                | 2                      | 28/40              |

#### Immersible Transducer Plate

Image:



| Model    | Plate Size<br>(L*W*H)mm | Transducers<br>(pcs) | Ultrasonic Power<br>(W) | Generator<br>(set) | Suitable tank<br>(L) |
|----------|-------------------------|----------------------|-------------------------|--------------------|----------------------|
| JP-1006I | 305*205*100             | 6                    | 300                     | 1                  | 10~15                |
| JP-1012I | 355*305*100             | 12                   | 600                     | 1                  | 30~40                |
| JP-1018I | 340*280*100             | 18                   | 900                     | 1                  | 60~70                |
| JP-1024I | 430*280*100             | 24                   | 1200                    | 1                  | 70~80                |
| JP-1030I | 460*370*100             | 30                   | 1500                    | 1                  | 90~100               |
| JP-1036I | 550*450*100             | 36                   | 1800                    | 1                  | 130~140              |
| JP-1048I | 600*450*100             | 48                   | 2400                    | 2                  | 170~180              |

#### Immersible Transducer Tube

Image:



| Model   | Tube Size | Transducers | Ultrasonic Power | Generator | Length of wire |
|---------|-----------|-------------|------------------|-----------|----------------|
|         | (D*H)mm   | (pcs)       | (W)              | (set)     | (M)            |
| JM-1003 | 57*180    | 3           | 150              | 1         | 1.5            |
| JM-1006 | 57*300    | 6           | 300              | 1         | 1.5            |
| JM-1012 | 57*550    | 12          | 600              | 1         | 1.5            |
| JM-1018 | 57*750    | 18          | 900              | 1         | 1.5            |
| JM-1024 | 57*1000   | 24          | 1200             | 1         | 1.5            |
| JM-1036 | 57*1520   | 36          | 1800             | 1         |                |

Immersible Transducer Plate/tube can be put in any tank, but it doesn't have heating function.

The price of tube is much higher than plate, Ultrasonic Tube is only used for special purpose, such as in Lab.



**SkyMen Technology Corporation Limited**



86-755-27094405



info@skymen.cc



skymenultrasonic.com

Floor 1st & 2nd, Building 3, Tanggang Taifeng Industrial Park, Dawangshan Community, Shajing Street, Bao'an District, Shenzhen